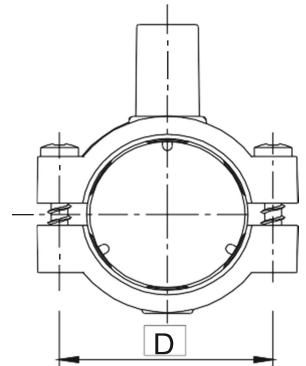
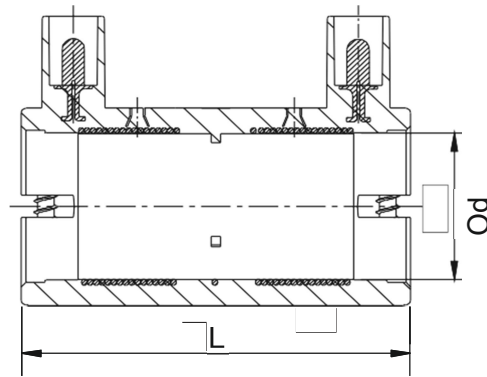


## ELECTROFUSION I.C. COUPLER

For Gas/Water-SDR 11 (ISO S5)



Kimplas Electrofusion couplers, manufactured in PE 100 Black material and are of SDR 11 rating (PN 16). For exact recommendations on compatibility, for welding with SDR 9 through SDR 21 or PN 6 through PN 16 pipe, refer Kimplas Technical Specifications Manual. Kimplas Electrofusion fittings are suitable for permanently connecting MDPE 80 and PE 100 pipes, both in straight form as well as coiled form.

### SPECIFICATION TABLE

d	Product Code	SP	Weight (gm)	D (mm)	L (mm)	FT	CT
20	C20BKD	175	53	31	77	22	4
25	C25BKD	150	63	36	79	28	4
32	C32BKD	100	75	44	82	42	4
40	C40BKD	80	96	53	83	52	7
50	C50BKD	54	141	65	105	55	7
63	C63BKD	35	220	81	100	70	7

BKD - PE 100 Black - 4mm Pin

SP=Standard Pack Quantity, FT=Fusion Time in Seconds, CT=Cooling Time in Minutes, SP and Weight are given for reference only

Note: Every effort has been made to ensure the information in this brochure is correct at the date of issue. Kimplas operates a policy of continual product improvement and range extension, hence reserves the right to modify product specifications, without prior information, in line with market requirements.

**TRUSTLENE**

A NORMA Group Company-  
Kimplas Piping Systems Private Limited

## STANDARDS

- Complies with EN1555- Part 3 for Gas, EN12201- Part 3 for Water. AS/NZS 4129 for Gas & Water GIS-PL2-Part 4 for Gas
- PE pipe compatibility- IS: 14885, EN 1555-2, IS: 4984, EN 12201-2, ISO: 4437, DIN: 8074, ISO: 4427-2.

## COMMON APPLICATIONS

- Pipe to pipe connections during laying.
- Pipe connections in areas difficult to access, in narrow trenches.
- Repairing localized damages on pipes, pipes stub ends, connections of transition fitting etc.
- Pipe connections with spigot-end fittings.
- Reinforcement of squeezed or kinked portions of permanently laid (immobile) pipes.

## INSTALLATION

Joint preparation must be done as specified in the installation instructions. Pipe outside surface must be scraped to remove oxidized layer. Before fusing, pipe ends, and spigot end of the fittings must be cleaned to remove dirt and Contamination. Complete Installation Manual may be downloaded.

## ADVANTAGES

- Standard operating voltage - 40 V.
- Provided with Screws for quick connection of pipes with coupler. No need of external clamps.
- Fitting with integral clamping for holding and exact fitment of fitting with pipe.
- More connections with less effort. Save time on site.
- Brings down inventory of tools and associated costs.
- Clearance Fit for ease of installation and removable centre stops for easy repairs.  
Same fusion time for various SDR rated pipes.
- Optimal fusion and cold zone for a strong and sturdy joint.
- Permanent Batch Indicator, Raw Material Type and SDR marking.
- Each fitting individually packed in PE bag to protect against contamination and oxidation.

### Contact Us

#### Kimplas Piping Systems Private Limited

B-20, MIDC, Ambad, Nashik- 422010 | India | [www.kimplaspiping.net](http://www.kimplaspiping.net)



A NORMA Group Company-  
Kimplas Piping Systems Private Limited