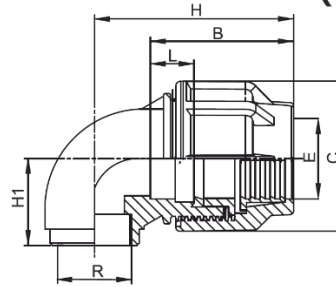


# COMPRESSION ELBOW WITH FEMALE THREADED OFFTAKE (FTO)



	Size	Code	g	SP	B	C	E	L	H	H1
1	20 x 1/2"	CFE20X050BLA	54	150	40	45	21	20	71	50
2	25 x 3/4"	CFE25X075BLA	90	100	42	53	27	20	81	58
3	32 x 1"	CFE32X100BLA	132	60	63	65	34	26	85	61
4	40 x 1 1/4"	CFE40X125BLA	254	30	84	82	44	26	113	53
5	50 x 1 1/2"	CFE50X150BLA	343	18	95	93	54	26	125	62
6	63 x 2"	CFE63X200BLA	658	12	110	117	64	33	155	70

**Note : SP - Standard Packing Quality, g - Individual fitting weight in gms**

Kimplas Compression fittings PN 16 and are designed to use with all types of Polyethylene Pipes i.e. HOPE, MOPE (grade PE100, PE80, PE63, etc.). Unique design of the fitting facilitates insertion of the pipe into fitting without disassembling the fitting.

The working temperature range of the fittings is - 5° to + 40°C and the fittings are recommended for cold water services only. The fittings are ideally suited for connecting House Service Connections in Drinking Water Distribution piping networks. For exact recommendations on the applications and use, refer Kimplas Technical Specifications Manual.

### Standards:

- Pipe compatibility ISO :4427-2, EN:12201-2, IS: 4984, DIN: 8074
- Dimensions, features & functional tests:ISO:3501,ISO:3503,ISO:3459
- Threading: IS:554, ISO:7/1, BS:21, DIN:2999
- Complies with ISO:14236

### Common Applications:

- Make a 90° turn on PE pipe with female threaded connection
- Pipe connections in areas difficult to access in narrow trenches
- Repairing localized damages on pipes Connections
- Pipe Connections of permanently laid down (immovable) pipes
- Enables speedy laying of Pipes in emergencies & ideal for semi permanent Water Supply Systems

### Installation :

Joint preparation must be done as specified in the installation instructions. Pipe ends must be cut square and burr-free before using with the fittings. Chamfer may be provided on the pipe end to facilitate ease of pipe insertion. To install the fitting, there is no need to open the nut and other components of the fitting. To install the fitting, just loosen the nut by three to four turns, insert the pipe into the fitting until the pipe crosses the rubber seal and stops at the pipe stop. Then tighten the nut by hands only. For fittings of size 40 mm and above a wrench recommended by Kimplas may be used for additional tightening. The nut should be closed tightly, however there is no need for the nut to actually meet the body. Complete Installation Manual may be downloaded.

### Advantages :

- The body is made of Polypropylene and designed with modular construction and axial reinforcement
- The nut made of Polypropylene, with its sturdy design holds the pipe-fitting assembly intact with continuous working pressures upto 16Bars
- The grip ring made up of POM (Poly-acetal) prevents the pipe being pulled out from the fitting
- The PP (Packing Pressure) Bush exerts thrust on the rubber O-Ring / Gasket, compresses on pipe & fitting body to ensure leak-tightness
- Rubber O-Ring / Gasket prevent leakage under internal pressure as well as under external pressure as incase of vacuum and/or suction
- Plastic & rubber materials conform to the Standard requirements for use with potable water for human consumption
- Connecting to BSP threaded GI Pipe & fittings & brass/PVC valves etc
- Higher penetration of Pipe in the fittings enables for proper alignment
- Clearance-Fit for ease of installation and repairs
- Tolerance fit to take care of ovality of coiled pipes
- Permanent Batch Indicator, Size, PN rating and Raw Material Grade marking for ease of traceability
- Compact but sturdy design for ease of installation and trouble free service

